



The Mobility Master Plan: shaping sustainable mobility in the Metropolitan Region of Barcelona

European Conference on Sustainable Urban Mobility Plans
June 2019

1. What is ATM?

- ➔ The Autoritat del Transport Metropolità (Metropolitan Transport Authority or ATM) is an agency participated by Catalan Government and some municipalities of the metropolitan region of Barcelona.
- ➔ It covers 350 municipalities.
- ➔ 6 million inhabitants.



1. What is ATM?

➔ The most important functions corresponding to the ATM are:

☰ To coordinate the collaboration between

- Public administrations that hold the services
- Collective public transport infrastructures of the Barcelona area
- The central administration of the State

☰ To do the infrastructures and services planning and the future regulatory framework.

☰ To draft, process and evaluate the **Mobility Master Plan 2020-2025** (pdM)



COM ENS MOUREM?

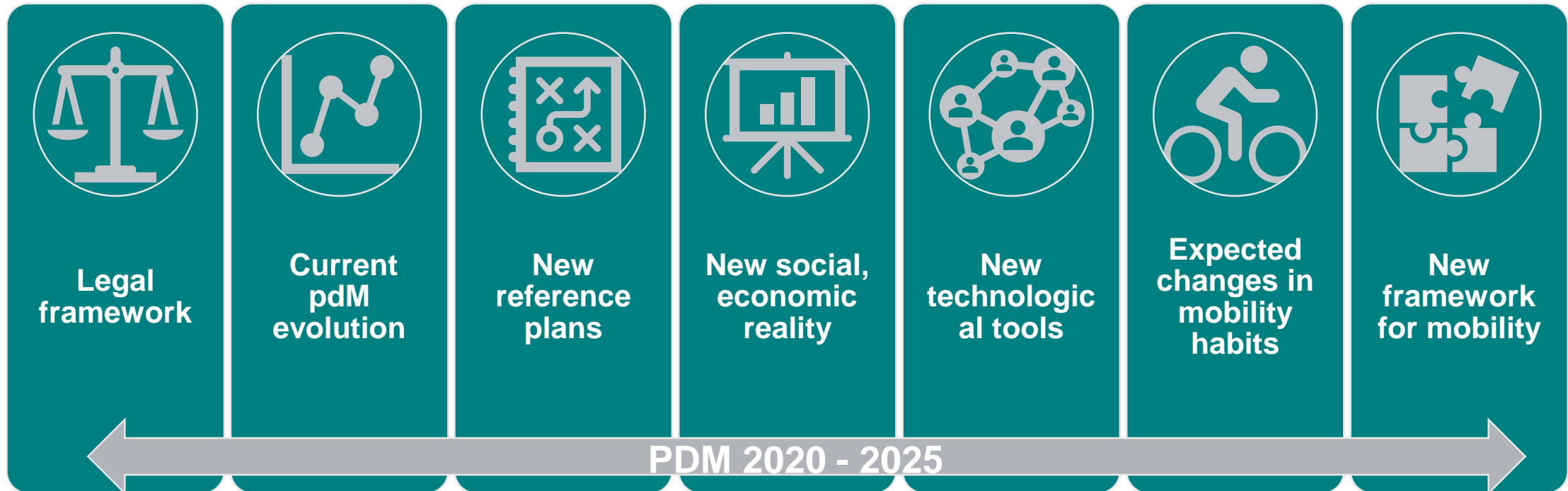
Pla Director de Mobilitat 2020-2025

2. pdM 2020-2025

- ➔ The Mobility Master Plan (pdM) is the instrument to plan mobility in the Integrated Metropolitan Mobility System of Barcelona (SIMMB).
- ➔ It develops territorially the National mobility guidelines.
- ➔ It plans mobility by considering all modes of transport (passengers and merchandise transport).



3. Motivations for writing the new pdM



4. Strategic objectives



Mobility
Healthy and
sustainable



Mobility
Efficient and
productive



Mobility
Safe and
secure



Mobility
Inclusive
and equitable



Mobility
Digital and
intelligent

4. Strategic objectives



- Modal transfer towards more sustainable modes and minimization of journey distances.
- Less energy consumption and less impact of mobility on climate change.
- Improvement of people's health and minimization of social costs.
- Favor the population physical activity.



4. Strategic objectives



Mobility
Efficient and
productive

- Increase of the transport model efficiency by favoring socio-economic optimization of the system.
- New jobs with special emphasis on the new technology sector.
- Promotion of new business models that make use of opportunities that arise from the circular and innovative economy.



4. Strategic objectives



- Accidents reduction and improvement of the safety perception.
- Reliable and responsible public transport system with users.
- Promotion of safe and high-quality spaces for active modes.
- System cybersecurity guarantee.



4. Strategic objectives



- Accessibility guarantee of the mobility system for all user types.
- Guarantee of the needs of the different user types within the mobility system.
- Incorporation of gender and age perspective into the entire mobility system.



4. Strategic objectives



Mobility
Digital and
intelligent

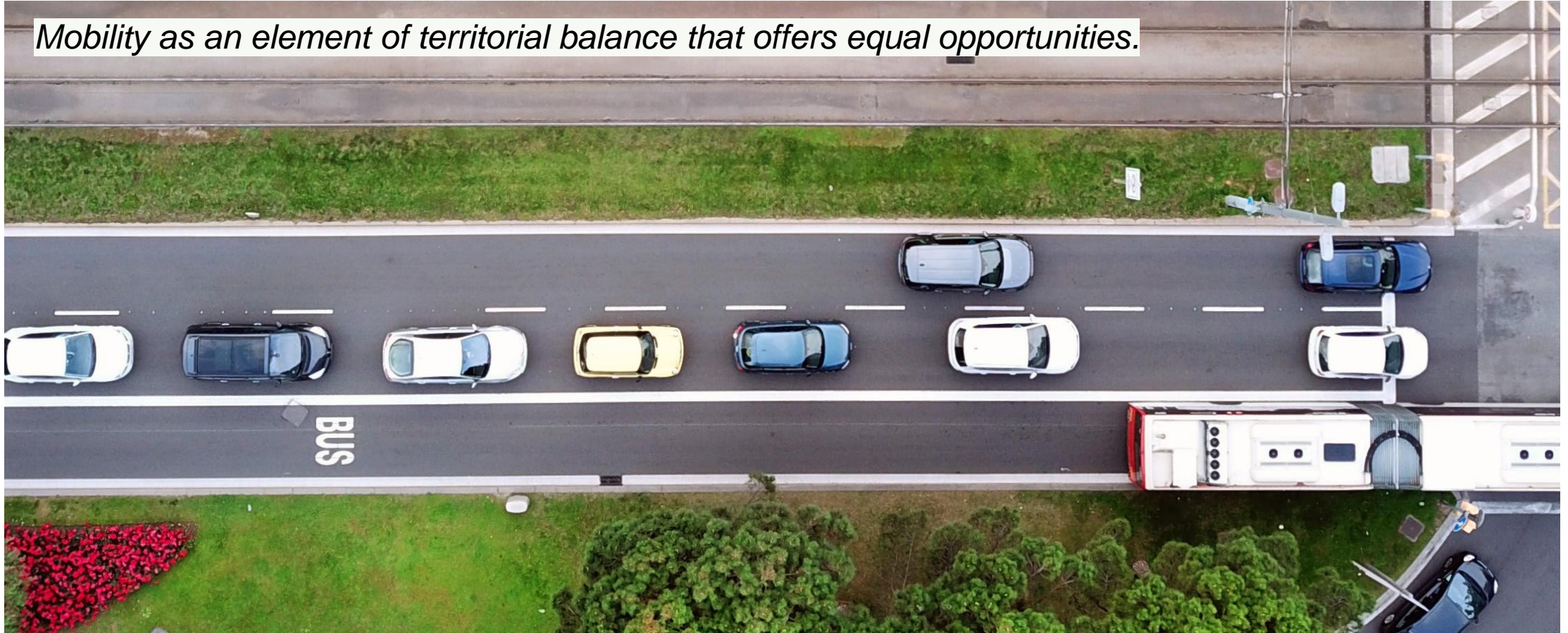
- New technologies incorporation into mobility planning and management.
- To bring mobility technologies closer to the city and companies.
- Promotion digital mobility to serve citizens mobility needs.
- Prepare the mobility system for the challenges involved in mobility automation of mobility.



5. Action lines

Territorial balance and equality of opportunities

Mobility as an element of territorial balance that offers equal opportunities.



5. Action lines

Urban Planning



5. Action lines

More links between the pdM and the Sustainable urban mobility plans (PMUS).

Defining a strategy that covers and conditions the PMUS.



5. Action lines

Connected and intermunicipal network

Advancing in the non-motorized connections between municipalities.



6. Relation pdM - SUMP

- ➔ It will establish the modal split and the emission reduction targets to apply in the SUMP.
- ➔ The pdM will put tasks to the SUMP in the form of more specific actions (mobility networks, management actions, ...).
- ➔ It will define the necessary actions to improve the monitoring of the implementation of the measures and their effectiveness.



ATM

**Àrea de Barcelona
Autoritat del Transport
Metropolità**

**The Mobility Master Plan:
shaping sustainable mobility
in the Metropolitan Region of Barcelona**

June 2019

Muntaner 315-321, Barcelona 08021
+34 933 620 020 – atm.cat – @ATMbcn

